

Setup e-mail on Outlook

First of all, don't forget to ask your sysadmin to setup [autodiscover](#), as it will make the process of setting up Thunderbird much easier.

Below, step by step tutorials according to Outlook version used, which you can usually check when opening Outlook or in the Help menu/About. There's also a [web site with generic Outlook setup](#) which can be useful, so you can view screen shots.

Also notice that if this is the first time you open Outlook since its install, a window will immediately pop up asking you to setup your email account. Click yes and proceed and follow our instructions starting with section in which you start typing in your account data.

Finally, as per our tests, sent items and trash are automatically saved in IMAP folders, except in older Outlook 2003. Nonetheless, information about this is available for [Sent Items](#) and [Trash](#), specially useful if your Outlook is not in English and you want to manually define folders used for these base folders. Notice that our WebMail automatically decodes the english default names (Sent, Trash, Drafts, Spam) so that it shows them in the language in which you accessed WebMail. In some cases, however, it might be required to change folder mappings in WebMail, if Outlook does not do this conversion automatically, besides mapping the localized names in your Outlook.

Outlook 2013/2010:

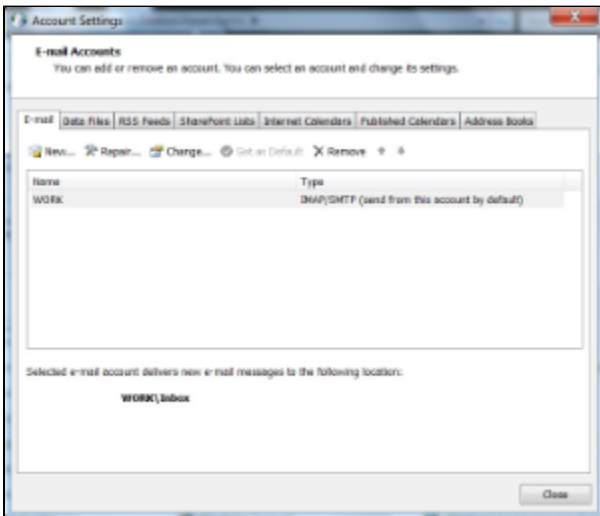
- Click on the **File** menu and it shall show you the Info tab
- Click on **+ Add Account**
- Type in your full name, e-mail address and password and click on Next
- Click on **Allow** when asked about autodiscover.xml
- Click on **Finish**



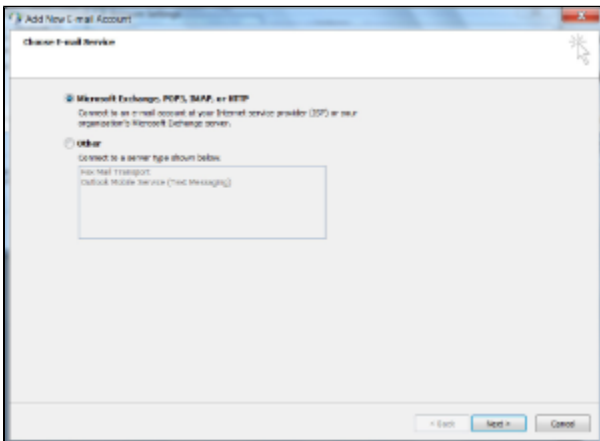
Note that Outlook will automatically setup the account as IMAP. If you want to set up the account as POP, you have to setup the account manually. IMAP is recommended, as it's a protocol made to support several devices accessing one same account, with all folders synced at our server, which also guarantees that our backups will be executed.

Outlook 2007:

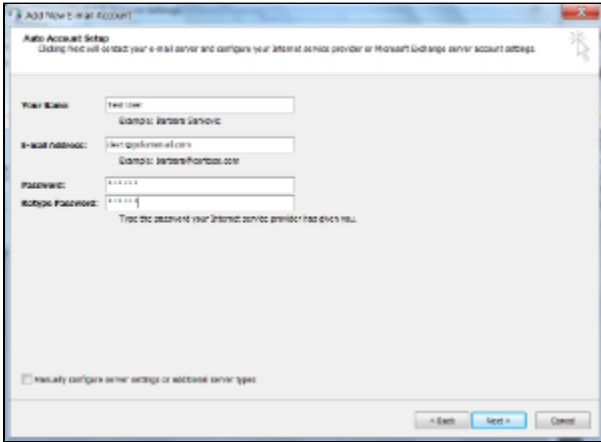
Go to **Tools -> Account Settings** and click on **New**



Click on **Next**



Enter the user's full name, his e-mail address and password. Click on **Next**



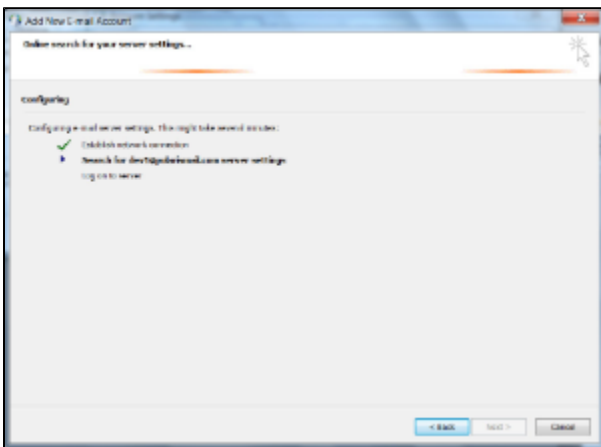
Add New E-mail Account

Auto Account Setup
Clicking Next will detect your e-mail server and configure your Internet service provider or Microsoft Exchange server account settings.

Your Name:
E-mail Address:
Password:
Retype Password:
Type the password your Internet service provider has given you.

Manually configure server settings or select a server type

Outlook will search for the web service...



Add New E-mail Account

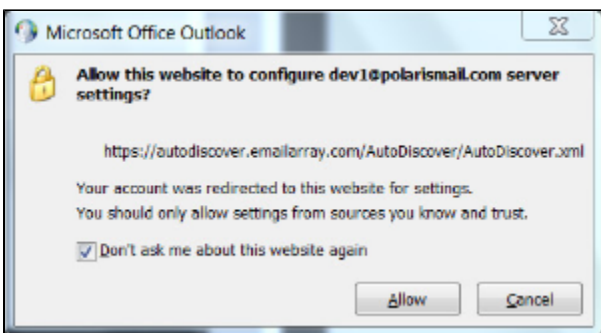
Online search for your server settings...

configuring

Configuring e-mail server settings. This might take several minutes:

- ✓ Establish network connection
- ▶ Search for dev1@polarismail.com server settings. Log on to server.

Allow autodiscover.emailarray.com/AutoDiscover/AutoDiscover.xml to configure the client.



Microsoft Office Outlook

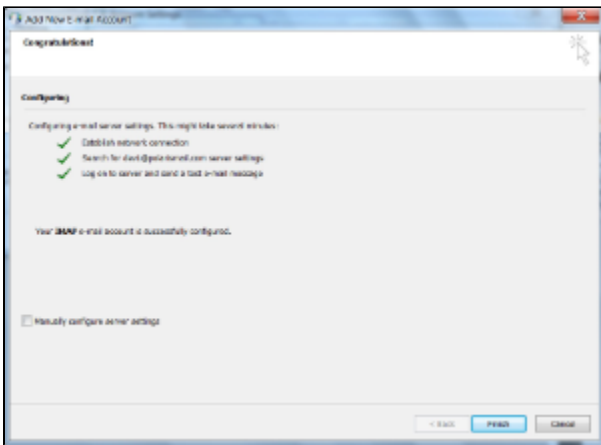
Allow this website to configure dev1@polarismail.com server settings?

<https://autodiscover.emailarray.com/AutoDiscover/AutoDiscover.xml>

Your account was redirected to this website for settings.
You should only allow settings from sources you know and trust.

Don't ask me about this website again

The account is now configured. Click on **Finish**



i If you're annoyed by the fact that Outlook, by default, puts a line (strikethrough) in deleted e-mails, see [this FAQ](#).

Outlook 2003:

- Access **Tools -> E-Mail Accounts**
- The E-mail Accounts wizard will open
- Select **Add a new e-mail account** and click on **Next**
- Select IMAP (or POP, if you prefer) and click on **Next**
- Click on **Allow** when asked about autodiscover.xml and then click on **Finish**
- If you don't get an alert about autodiscover, setup Incoming and Outgoing mail servers manually, as per our [servers & ports page](#) (imap.emailarray.com and smtp.emailarray.com)
- In the **username** field type in your full e-mail address
- Click on the **More Settings** button and in the **Outgoing Server tab**, mark the checkbox for "My outgoing SMTP server requires authentication"
- On the **Advanced tab**, check ports, for IMAP with SSL checkbox enabled, use port 995 and for SMTP with SSL, use 465
- Click on **OK** to close configuration windows

i Outlook 2003 will not store sent emails in IMAP's sent items folder. For a workaround, either upgrade to a newer Outlook or check [this FAQ](#). Setting up trash to use IMAP is much more complicated in Outlook 2003, requiring macros, etc., so it's suggested to upgrade to a newer Outlook.